

ATTACHMATE. EXTRA! Personal Client

Windows, Windows 95, Windows NT

version 6.2

The premier value solution for enterprise information access.

Raise productivity with wide ranging user services and see how EXTRA! Personal Client translates into bottom line value.

EXTRA! Personal Client provides a complete Windows solution for multi-host enterprise information access to any data source – public or private – from both local and remote locations. Connect to mission critical host systems (IBM® mainframe, AS/400®, VAX® and UNIX systems) using SNA, TCP/IP or both. Integrate internal networks with the outside world utilizing your choice of browsers and a collaborative workspace. EXTRA! Personal Client also includes centralized software management which extends both productivity and ease of use to network management.

Resolve migration issues.

EXTRA! Personal Client is the only complete Windows solution available today. It includes both 16- and 32-bit versions on one CD, allowing you to migrate over time and support a mixed Windows environment with a one-product standard. And when you choose to migrate, EXTRA! Personal Client's software management and distribution tools will take you there.

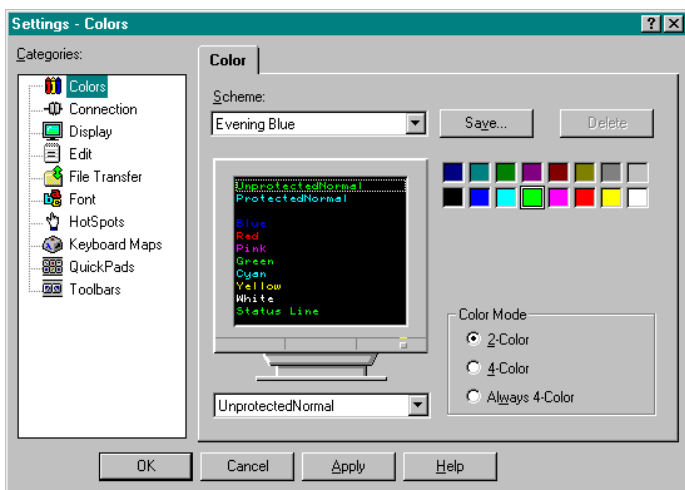
Meet your organization's total information needs with a superior all-in-one access strategy.

EXTRA! Personal Client focuses on the enterprise, while incorporating much more than just access to multi-host applications and data. With Intranet building blocks in place, it includes an award-winning collaborative workgroup component, embraces open systems with a comprehensive TCP/IP solution, and bridges the gap to the Internet with your choice of Microsoft® Internet

Explorer or Netscape Navigator.™

EXTRA! Personal Client also supports MPTN, also known as AnyNet®, a mixed protocol standard for full SNA support over TCP/IP. MPTN eliminates the compromises of extended attributes when using TCP/IP in an AS/400 environment.

Anyone requiring access to information is able to navigate effortlessly – everything from Web sites, news groups and databases to enterprise networks populated with multiple hosts including mainframe, AS/400, and VAX or UNIX systems. For LAN administrators, complete centralized software distribution and asset management functionality is included.



Easily customize host session documents with task oriented colors, connections, QuickPad, hot spots, fonts and toolbars.

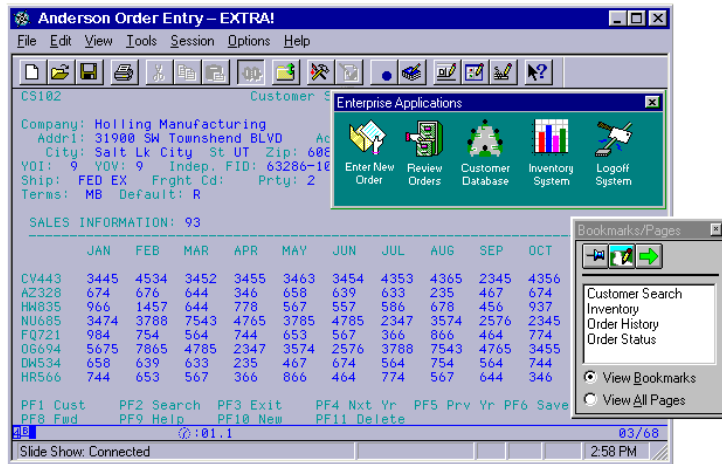
New in this release

- Windows NT 4.0 support
- 43% faster session load time
- Enhanced API performance and support
- 32-bit 3270 host graphics plus VT340 host graphics
- Support for IBM® multi-protocol transport networking (MPTN) for SNA over TCP/IP in LU 6.2
- Microsoft Internet Explorer
- 32-bit version of Attachmate's AS/400 APCP Router
- 3270 light pen support



Easiest to Use

EXTRA! is consistently rated as the easiest to use information access product by The Tolly Group.



Global host access is now just a click away. Attachmate's host-aware technology lets you create shortcuts like bookmarks and on-screen icons extending the ease-of-use and simplicity of web browsers to host systems. Information is accessed transparently and automatically.

EXTRA! Personal Client provides highly effective ways for organizations to work smarter and leverage existing enterprise investments. For Windows 95 and Windows NT users, efficiency and productivity accelerate, the learning curve flattens, support requirements fall, and the global cost of computing declines.

Host-aware technology dissolves the complexity of host interactions.

Advanced functionality simplifies all of your host interactions. Navigate without the need for macros, customize host screens, and integrate host information into your desktop applications.

Document integration with OLE 2.0 support.

A technology that EXTRA! Personal Client fully exploits with Windows 95 and Windows NT is the ability to create transparent links between Windows documents and host documents.

Attachmate's implementation of OLE 2.0 technology allows users to dynamically link host data to Windows applications such as Microsoft Office, Lotus® SmartSuite®, and WordPerfect® Office. The information becomes fully integrated and transparently linked so any change to pertinent host data can be refreshed easily when opening the desktop application files. No programming or macros are required. Savvy intelligence like this makes EXTRA! Personal Client a true partner with your hosts.

Treat host sessions as documents. Tailor host session settings and save them as documents much as you would with any Windows-based application. Each of your host documents can be customized with a unique list of bookmarks and page events, including the location of host information, colors, hot spots, fonts, toolbars and QuickPad™

Place bookmarks to access information directly and immediately.

EXTRA! Personal Client's bookmarks extend the ease-of-use and simplicity of web browsers to enterprise systems. Bookmarks transport users directly to host pages, and with page events, give you the easiest possible way to access host applications in your enterprise.

Gain direct access to your enterprise databases, servers, and documents.

DBQuery, included in EXTRA! Personal Client, provides high performance, point-and-click access directly to enterprise data sources including DB2®, SQL/DS™ and DB2/400™. With full OLE 2.0 support, query information can be easily linked into the popular Windows application of your choice.

EXTRA! Personal Client includes the Attachmate Remote LAN Node® client. Increase the productivity of your remote or traveling employees by extending the reach of LAN based information and applications. This powerful technology supports all popular network environments and protocols with superior management, security, broad deployment tools and a unique open architecture.

For workgroup productivity, Attachmate includes a collaborative client. You can create and access a collaborative workspace combining group conferencing, document management, electronic publishing, and workgroup Internet access.

Host graphics support. Full mainframe graphics are available for 16-bit Windows, and 32-bit Windows 95 and Windows NT via integrated host graphics which support both programmed symbol graphics and vector graphics. For the VAX/UNIX environment, VT340 graphics support ReGIS™, Sixel, and Tektronix®.

Integrated APPC client. Integrated into EXTRA! Personal Client is an APPC client, so you can take advantage of the growing use of APPC-compliant applications. This means you can migrate to peer-to-peer data access without jeopardizing your investment in client software.

LAN install simplifies software distribution.

Network administrators can now install EXTRA! Personal Client on a network server for efficient distribution to other users. Program files remain on the server while user files can be stored wherever you choose.

The new bedrock for building enterprise client/server applications.

EXTRA! Personal Client was built from the ground up as a client/server development platform. With support for Attachmate's EXTRA! Developer Series products such as QuickApp®, QuickDB™, QuickPeer™, and Quick CICS™, developers have a solid foundation on which to build new enterprise client/server solutions and empower users. Developers can take full advantage of EXTRA! Personal Client's enhanced cross-host 16- and 32-bit APIs, reusable navigation objects and APPC to rapidly create graphical multi-host, transaction-processing applications. EXTRA! Personal Client also supports 16-bit client/server applications in newer 32-bit environments, providing industry leading migration protection for your existing client/server applications.

Management control, integrated installation, and security.

As a strategic partner supporting and building value into your enterprise, Attachmate also makes it easy to consolidate the management of software inventory on your desktops. Administration capabilities help hold down the total cost of ownership. That's why EXTRA! Personal Client contains Attachmate's complete award-winning management software to give you time-saving, centralized control. Configure and troubleshoot, install and distribute software throughout your enterprise. You get inventory and metering services, and a full record of everything that happens.

Unequaled response to crucial issues.

Attachmate responds as no other organization in the industry with 72-hour critical problem code fixes. We guarantee to resolve crucial issues within three business days. This extraordinary level of support is included with SUPPORTWARE!™ Elite, Strategic and Global Plans.

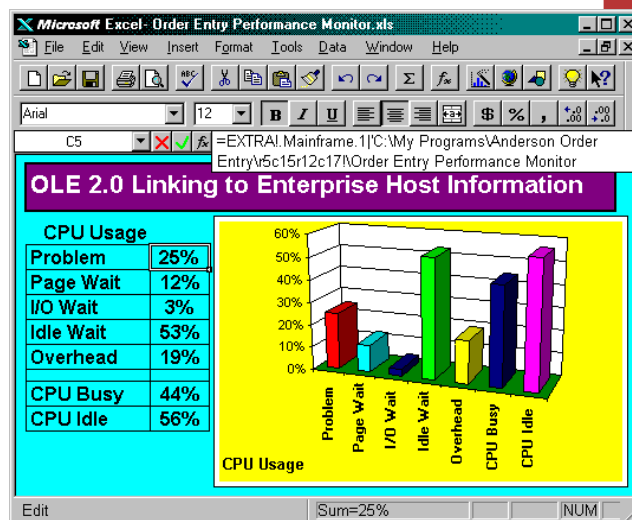
For first-time installations of Attachmate software, we offer 60 days of complimentary SUPPORTWARE!, a service that helps you get up and running and keeps you up-to-date. For information on extended SUPPORTWARE! services, call 800-288-5232.

Attachmate is the leading supplier of universal information access software to large organizations. More than 45% of all host-connected desktops are now running Attachmate software. These products safely extend Intranets by linking host systems, Internet systems and workgroups together. Award-winning Attachmate products offer solutions for multi-host application and database access, remote access, workgroup productivity, enterprise client/server development, network and software management, and corporate-to-Internet systems integration.

Call today for more information.

For more information about EXTRA! Personal Client, contact your local Attachmate reseller or call us toll-free in the United States or Canada at **800-426-6283**. For international sales information, call USA **206-644-4010** or contact your nearest sales office.

Attachmate responds as no other organization in the industry with 72-hour critical problem code fixes. We guarantee to resolve crucial issues within three business days.



Working with host information is as easy as using Windows applications like Microsoft Excel. Simply point-and-click and let EXTRA! Personal Client navigate, link and update data without opening a host session.



Attachmate Corporation
3617 131st Ave SE
Bellevue, WA 98006 USA

Phone:
(800) 426-6283
(206) 644-4010
Fax: (206) 747-9924

Customer Support
(800) 688-3270

International Fax:
(206) 649-6675

FaxBack: (206) 649-6595

World Wide Web:
<http://www.attachmate.com>

Australia (Melbourne)
(61) 39 694 6711

Australia (Sydney)
(61) 2 9975 7188

Belgium
(32) 2-481 07 50

Brazil
(55) 11 532-2830

Denmark
(45) 42 17 10 00

Finland
(358) 0437 5236

France
(33) 1 4604 1010

Germany
(49) 89 99 351-0

Hong Kong
(852) 2 572-8988

Italy
(39) 2 6713101

Japan
(81) 3 5560 8970

Latin America
(305) 358 7830

Malaysia
(603) 245 5660

Mexico
(52) 5 208 0360

Netherlands
(31) 20 696 6031

Norway
(47) 22 62 73 47

Portugal
(351) 1 7928750

Singapore
(65) 223 0233

Spain
(34) 1 300 86 00

Sweden
(46) 8 6307530

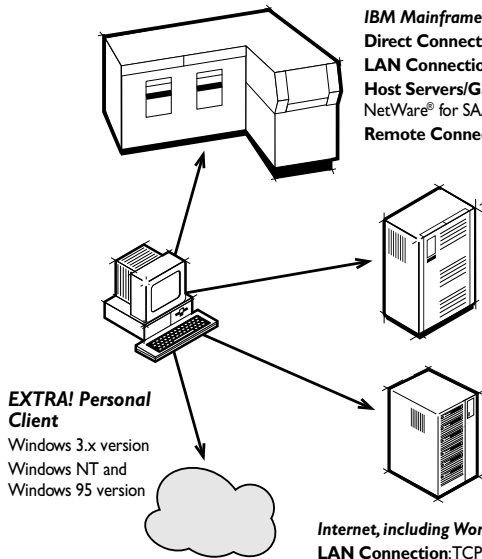
Switzerland (Zurich)
(41) 1 289 90 11

Switzerland (Geneva)
(41) 22 879 04 10

United Kingdom
(44) 1 734 890 390

Multi-Host Connectivity

Includes connectivities for Windows 3.x, Windows NT and Windows 95.



EXTRA! Personal Client

Windows 3.x version
Windows NT and
Windows 95 version

IBM Mainframe

Direct Connections: Coax, TN3270 direct, NCI/A

LAN Connections: TCP/IP, IPX/SPX™, NetBIOS, IEEE 802.2, Virtual 802.2 or APPC, TN3270e

Host Servers/Gateways: Attachmate ZIP!® SNA Server, IRMALAN™/EP, IBM Gateway, IBM CICS™, NetWare® for SAA®, Microsoft SNA Server, Eicon® SNA Gateway

Remote Connections: SDLC or Asynchronous using ADLC or XADLC

IBM AS/400

Direct Connections: Twinax (16-bit) and 802.2 using PC Support Router, Attachmate Router, or NS/Router,® TN5250 direct, MPTN

LAN Connections: TCP/IP via Telnet server, IPX/SPX using Attachmate Router, Novell® 5K Router, or NS/Router

Host Servers/Gateways: Attachmate RALLY!™ Server for AS/400, NetWare for SAA using Attachmate Router, Novell 5K Router or NS/Router, Microsoft SNA Server using Attachmate Router or NS/Router

Remote Connections: SDLC or Asynchronous using Attachmate Router, PC Support Router, or NS/Router

DEC® VAX, UNIX Server or Alpha AXP™

Direct Connections: Serial, KEAlink® MSU

LAN Connections: LAT, TCP/IP, IPX/SPX, INT14, NET/1, CTERM

Host Servers/Gateways: NetWare for LAT, Firefox NOVIX™

Remote Connections: Serial, KEAlink MSU

Internet, including World Wide Web Services

LAN Connection: TCP/IP

Remote Connections: SLIP/PPP

Servers/Gateways: Telnet Servers

Features at a Glance

EXTRA! Personal Client

Includes features for both the full 16-bit version for Windows 3.x, as well as the 32-bit version for Windows 95 and Windows NT.

Multiple Host Support

- Mainframe
- IBM AS/400
- VAX
- UNIX
- Internet
- World Wide Web

Host Productivity Features

- Intelligent navigation (32-bit)
- QuickPad
- FT/Express™
- AS/400 BIFF F/T support
- Bookmarks and page events (32-bit)
- Full color editing
- Customizable toolbar
- Keyboard mapping
- Dynamic hot spots
- OLE 2.0 linking (32-bit)
- Data hot lists
- Quick fields (32-bit)
- AS/400 Data Queue

Tools and utilities

- DBQuery (direct access to DRDA™-compatible data sources including DB2, SQL/DS, DB2/400)
- 3270 host graphics (16- and 32-bit)
- VT340 host graphics (16- and 32-bit)
- Software management tools
- Remote LAN Node client
- Workgroup productivity client (conferencing, publishing, document management)
- Silent mode install
- Operating systems auto sensing
- Light pen support (16- and 32-bit)
- History on VT terminal
- APL Keyboard (16- and 32-bit)
- 122 Keyboard support: IRMAKey, IBM, KeyTronic® (16- and 32-bit)

Internet Applications

- High performance VxD TCP/IP drivers for Windows 3.1, 3.11, and Windows 95
- FTP client/server
- Proxy firewall support via FTP file transfer
- Microsoft® Internet Explorer
- Netscape Navigator
- PING
- BOOTP
- Line printer client (LPR)
- Line printer server (LPD)
- NFS™ (16-bit and Windows 95)

Client/Server Development Tool Support

- OLE 2.0 Automation
- APPC
- APPN EN Node
- APPN: password encryption
- CPI-C 2.0
- HLLAPI (16- and 32-bit)
- EHLLAPI (16- and 32-bit)
- WHLLAPI (16- and 32-bit)
- WinHLLAPI (16- and 32-bit)
- DOS HLLAPI pass through (Windows NT and Windows 95)
- Enterprise Access Library,™ a comprehensive set of communication interface function calls
- EXTRA! Basic (16- and 32-bit)

System Requirements

Windows 3.x: 486/SX 33MHz PC running Windows 3.1 or Windows for Workgroups 3.11, with 8 MB RAM

Windows 95: 486/DX 33MHz PC running Windows 95, with 12 MB RAM

Windows NT: 486/DX 33MHz PC running Windows NT 3.51/4.0, with 16 MB RAM

Optional Products

QuickApp
QuickDB
QuickPeer
Quick CICS
SELECT!™ Professional
Unisys® Connectivity
EXTRA! X (XWindow™ Connectivity)

Attachmate

© 1996 Attachmate Corporation. All Rights Reserved. Printed in the USA. Attachmate, EXTRA!, KEAlink, QuickApp, Remote LAN Node, and ZIP! are registered trademarks and Enterprise Access Library, FT/Express, IRMALAN, QuickPad, QuickDB, QuickPeer, SELECT!, RALLY! and SUPPORTWARE! are trademarks of Attachmate Corporation. AS/400, DB2, IBM, PROFS, AnyNet and SAA are registered trademarks and CICS, DB2/400, DRDA and SQL/DS are trademarks of International Business Machines Corporation. DEC and VAX are registered trademarks and Alpha AXP and ReGIS are trademarks of Digital Equipment Corporation. Eicon is a registered trademark of Eicon Technology. KeyTronic is a registered trademark of KeyTronic Corporation. Lotus and SmartSuite are registered trademarks of Lotus Development Corporation. Microsoft, Windows, Windows NT and MS are registered trademarks and BackOffice is a trademark of Microsoft Corporation. Netscape Navigator is a trademark of Netscape Communications Corporation. NFS is either a trademark or registered trademark of Sun Microsystems, Inc. in the United States and other countries. NOVIX is a trademark of FireFox Communications. Novell and NetWare are registered trademarks and IPX/SPX is a trademark of Novell, Inc. NS/Router is a registered trademark of NetSoft. Unisys is a registered trademark of Unisys Corporation. UNIX is a registered trademark in the United States and other countries, licensed exclusively through X/Open Company, Ltd. WordPerfect is a registered trademark of Corel Corporation. XWindow is a trademark of the XWindow Consortium. Tektronix is a registered trademark of Tektronix Corporation. All other trademarks or registered trademarks are the property of their respective owners.